

RAINFOREST FOOD CHAINS

ENERGY FROM SUN, SOIL & WATER

⇒ **PRODUCER**
Plants make food - leaves, flowers, nectar, fruit and litter

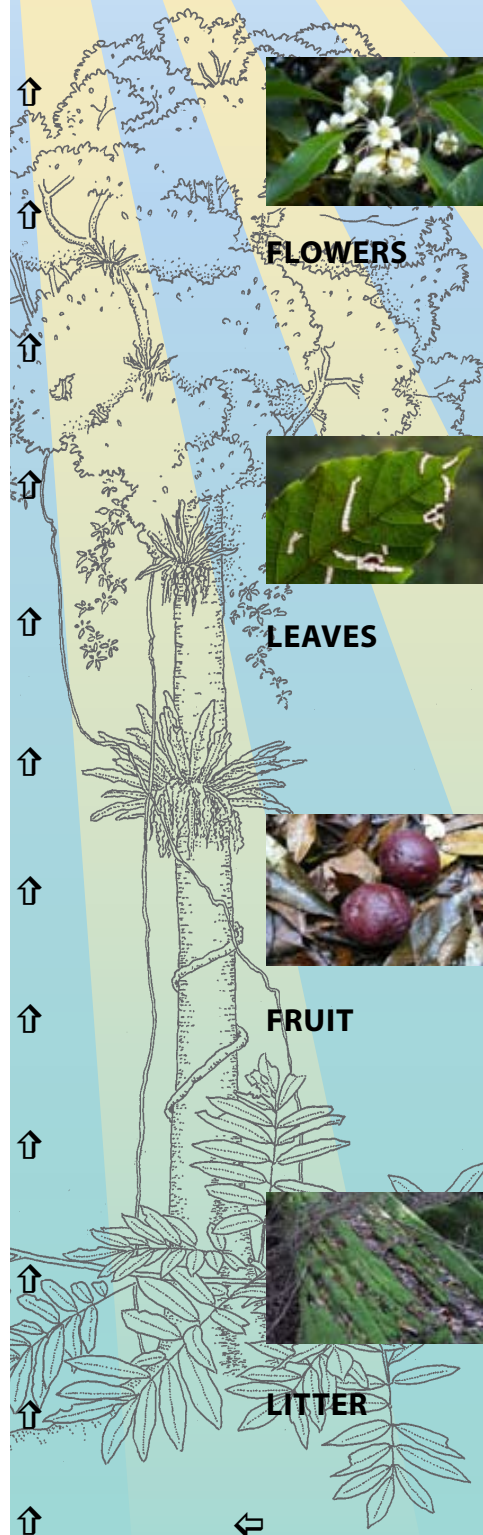
⇒ **1ST CONSUMER**

⇒ **2ND CONSUMER**

⇒ **3ND CONSUMER**

⇒ **DECOMPOSER**

EXAMPLES:



FLOWERS



⇒ Moth eats nectar at night



⇒ Spider eats moth



⇒ Grey Shrike Thrush eats spider



⇒ Shrike Thrush dies and is eaten by decomposers



LEAVES



⇒ Hawk Moth caterpillar eats leaves



⇒ Tawny Frogmouth eats Hawk Moth



⇒ Lace Monitor eats eggs of Tawny Frogmouth



⇒ Lace Monitor dies and is eaten by decomposers



FRUIT



⇒ Wonga Pigeon eats fallen fruit and seeds



⇒ Diamond Python eats Wonga Pigeon



⇒ Diamond Python dies and is eaten by decomposers



LITTER



⇒ Fungi lives on dead wood



⇒ Snail eats fungi



⇒ Noisy Pitta eats snail



⇒ Noisy Pitta dies and is eaten by decomposers

RAINFOREST FOOD CHAINS

Copy this page and cut out each of the cards.

Read the information on each, and arrange them to make your own rainforest food web.

Colour code : **Energy** ⇒ **Producer** ⇒ **1st Consumer** ⇒ **2nd & 3rd Consumer** ⇒ **Decomposer**

⇒ indicates a transfer of energy between trophic levels of photosynthesis and eating

Wanderer Butterfly
sips nectar



Booyong
leaves are edible



Lyrebird
scratches in
the leaf litter
for worms and
insects



Lace Monitor
eats insects, reptiles,
eggs, birds, mammals
& carrion



Looper Caterpillar
eats leaves



Forest Owl
nocturnal
predator of
rats, possums,
birds and
bats



Ants
eat remains of dead
animals



Echidna
digs for ants and
termites



Green Tree Frog
eats insects



Maggots
live on dead animals



**SUN, SOIL
& WATER**



Worms
eat dead plant material
in the soil



**Ring-tailed
possum**
eats flowers,
leaves
and fruit



Red-necked Pademelon
eats leaves and fruit



Rainforest tree
makes nectar in
flowers
from the
sun's energy



Fruit dove
eats fruit and
seeds



**SUN, SOIL
& WATER**



Diamond Python
hunts for possums,
birds, and frogs



Grey-headed Fruit Bat
feeds on rainforest
fruits
and nectar



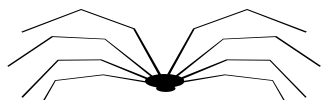
Strangler Fig
produces plentiful figs



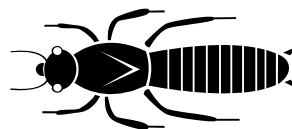
Domestic cat
eats small
birds,
mammals
and lizards



Huntsman Spider
hunts for insects in bark



Termites
Insect colony eats wood



Noisy Pitta
eats snails and insects

