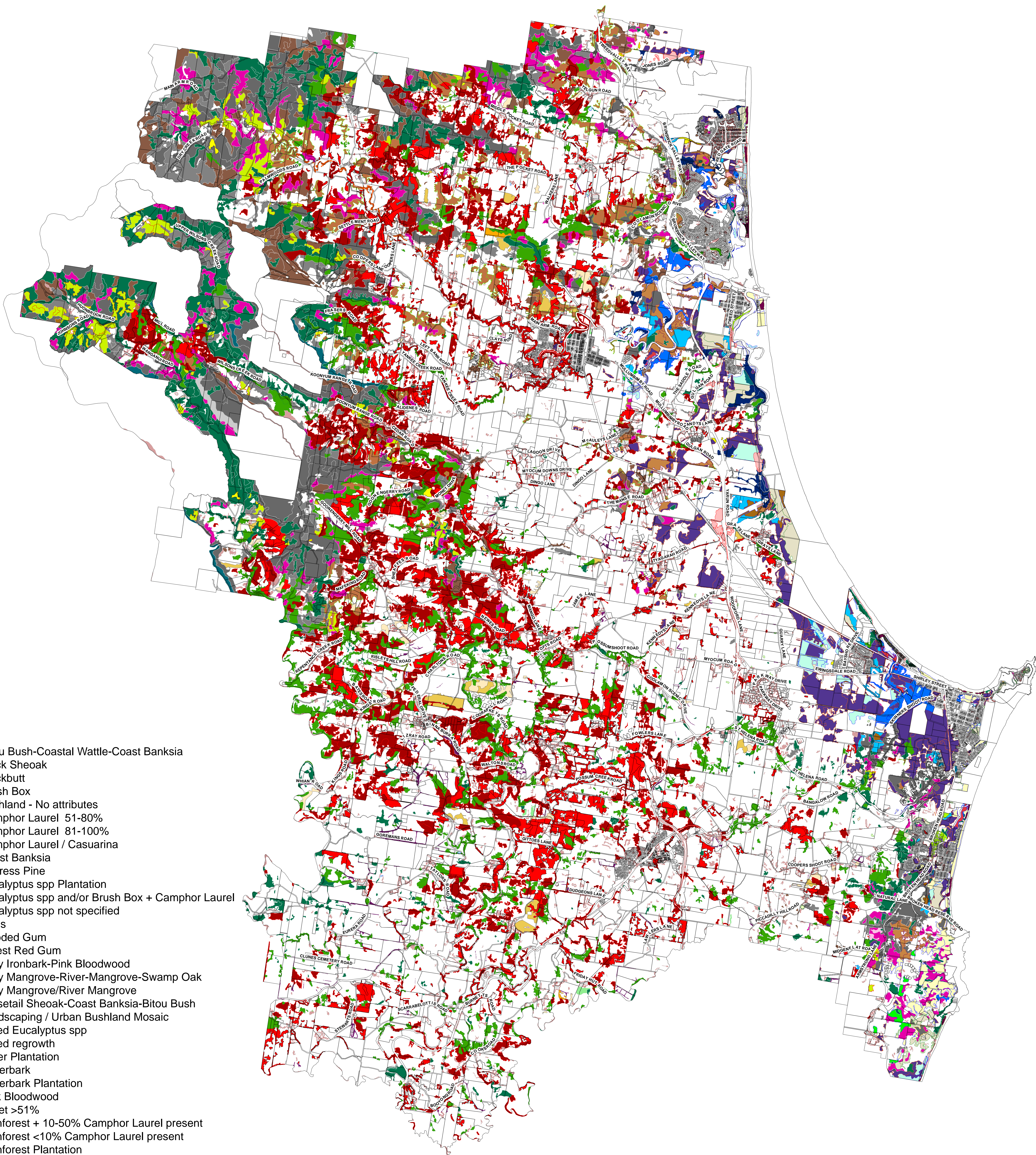



# Byron Shire Vegetation

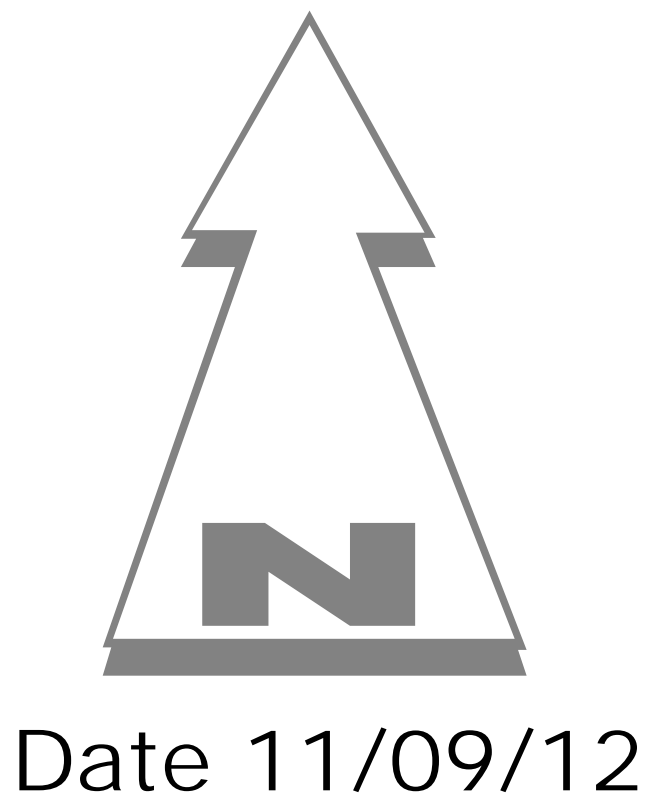
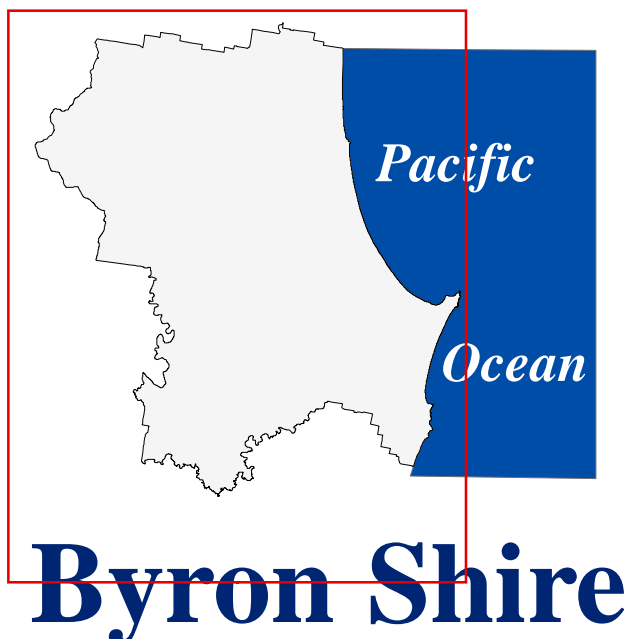


- Legend**
- Bitou Bush-Coastal Wattle-Coast Banksia
  - Black Sheoak
  - Blackbutt
  - Brush Box
  - Bushland - No attributes
  - Camphor Laurel 51-80%
  - Camphor Laurel 81-100%
  - Camphor Laurel / Casuarina
  - Coast Banksia
  - Cypress Pine
  - Eucalyptus spp Plantation
  - Eucalyptus spp and/or Brush Box + Camphor Laurel
  - Eucalyptus spp not specified
  - Ficus
  - Flooded Gum
  - Forest Red Gum
  - Grey Ironbark-Pink Bloodwood
  - Grey Mangrove-River-Mangrove-Swamp Oak
  - Grey Mangrove/River Mangrove
  - Horsetail Sheoak-Coast Banksia-Bitou Bush
  - Landscaping / Urban Bushland Mosaic
  - Mixed Eucalyptus spp
  - Mixed regrowth
  - Other Plantation
  - Paperbark
  - Paperbark Plantation
  - Pink Bloodwood
  - Privet >51%
  - Rainforest + 10-50% Camphor Laurel present
  - Rainforest <10% Camphor Laurel present
  - Rainforest Plantation
  - Saltmarsh
  - Scribbly Gum
  - Scribbly Gum-Red Bloodwood
  - Seagrass
  - Sedgeland/Fernland/Grassland
  - Swamp Mahogany/Swamp Box
  - Swamp Oak +/- Paperbark
  - Swamp Sclerophyll Forest
  - Tallowwood
  - Teatree
  - Wallum Banksia-Scribbly Gum
  - Wallum Banksia/Dwarf Banksia/Coast Banksia
  - Wattle spp >60% +/- other species
  - Windbreak

0 1,000 2,000 4,000 6,000 8,000 Metres

**Scale 1:42,000 @ A0**

 Disclaimer : While all reasonable care has been taken to ensure the information contained on this map is up to date and accurate, no warranty is given that the information contained on this map is free from error or omission. Any reliance placed on such information shall be at the sole risk of the user. Please verify the accuracy of the information prior to using it.  
Note : The information shown on this map is a copyright of the Byron Shire Council and the NSW Department of Lands.



Date 11/09/12