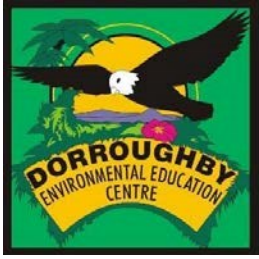


# Dorroughby Environmental Education Centre



NSW Department of Education

2101 Dunoon Rd,

DORROUGHBY NSW 2480

Phone 02 6689 5286

Mobile: 0418 211 972

Email: [dorroughby-e.school@det.nsw.edu.au](mailto:dorroughby-e.school@det.nsw.edu.au)

Website: [www.dorroughby-e.schools@det.nsw.edu.au](http://www.dorroughby-e.schools@det.nsw.edu.au)

## DORROUGHBY EEC TERM 4 2019

Please distribute this newsletter to all teachers interested in Sustainability Education.



### GENERAL NEWS

Jingelah Bloggerman! Hello Colleagues!

We love summer! Term 4 is shaping up to be jam packed with programs at our DEEC campus, Minyon Falls walks and coastal days with beach clean ups and canoe trips on the Brunswick River. We have have bookings with wonderful local schools and with students from as far away as Iluka and The Murri School from over the QLD border. Bookings for 2020 are also trickling in. Thank you to all who have attended/ will attend DEEC activities this term. It is always great to engage with your students and connect them to nature.

### ATTENTION ALL SCIENCE TEACHERS

Dorroughby EEC will be hosting a 1 day professional learning day at the centre on Monday 25<sup>th</sup> November. The topic is 'Teaching Aboriginal Content in the Stage 6 Sciences.

This training day will introduce some of the amazing scientific innovations and world firsts created by Aboriginal cultures over the last 68 000 years and demonstrate how that knowledge represents an approach to science that is very different to our own.

[Cont. over page...](#)



Environment = Life

### The course will address:

- the LAC priorities, specifically engaging with the Stage 6 Biology, Chemistry, Investigating Science and Earth and Environmental Science Syllabuses
- explore key themes and understandings from the various curricula such as the treatment of toxic compounds
- investigate megafauna and climate change and Aboriginal land management systems

There will be an opportunity to engage in developing practical, achievable ways of incorporating Aboriginal science into the Stage 6 Science classroom.

Participants will also receive a structured, detailed document that provides background information, lesson suggestions and discussion questions, including links to appropriate references, for all syllabus points with an Indigenous focussed LAC priority across the various stage 6 Science curricula.

The course is run by Dave Harrington botanist, ethnographer, educator and ecologist consultant and the DoE Aboriginal Education and Wellbeing team.

**Date:** 25th November 2019

**Cost:** \$100 per person

**MyPL** - Search for 'Exploring Aboriginal and Torres Strait Islander Knowledge in Stage 6 Science' Course code RG06324

**Inquiries:** DEEC 02 66895286

### Curriculum based Field Day for Ag students in 2020

Brunswick Valley Landcare (BVL) has secured a grant from local organisation 'Stone and Wood'. DEEC has partnered with BVL and are working towards coordinating two Regenerative Agriculture field days in 2020 with the funding. One of the field days will be local and one will be hosted in Grafton. The field days will be focused on Farming for the Future, be curriculum based and be offered to Ag students.

**WATCH THIS SPACE.**

### Our Practicum Student.

DEEC has been fortunate to have David Dreher as a SCU practicum student this term with DEEC. David has fitted in easily with our small, but dynamic, team. He has enthusiastically embraced Environmental Education and has enhanced the centre's educational content with his extensive knowledge of plants and regenerative practices. He looks great in a mob hat! We will be sad when his practicum ends.



Environment = Life

## Sustainable School Grants

Below is a link to a grant for up to \$15000 that you may wish to jump on board.

<https://education.nsw.gov.au/school-infrastructure-nsw/school-design-and-property-services/sustainable-schools-grants>

*The Sustainable Schools Grants is a four year \$10 million dollar program. Schools will be eligible to apply for grants of up to \$15,000 to empower students and school communities to develop innovative hands-on projects to make their school environments more sustainable.*

*Project examples include, but are not limited to, initiatives to save energy or water, plant more trees, establish food gardens and encourage recycling.*

*To be eligible projects need to demonstrate:*

- *Hands-on activities for students to learn about sustainability.*
- *Links to the NSW curriculum.*
- *Improvement to the sustainability in the school environment.*

*Applications will be assessed for compliance with the eligibility criteria and projects which meet the criteria will be randomly drawn until grant funding for this year is exhausted.*

*Applicants must get a commitment from their Principal or Pre-school Director and adhere to all Department Policies when implementing projects.*

*Applications for the first year of the SSG program opened on Friday 1st November and will close at 5pm on Friday 29th November 2019.*

*Successful grant recipients will be announced in late February 2020.*

**Dorroughby EEC can support you in this...**

The grant apparently will be only a few pages long and easy to complete. If you don't get chosen first round you can apply again for the next 3 years. As this is the first year and the short turnaround from grant opening until submission you may have a better chance statistically this year :-)

For curriculum links, DEEC can come and start your project with an environmental workshop and biodiversity, water, waste and energy audit in your school. This gives the students a clear understanding of sustainability and something to hang the rest of the project off. We will do this free of charge for up to 35 students. You have a year to complete the project. DEEC are happy to be involved at other times during the life of your project.

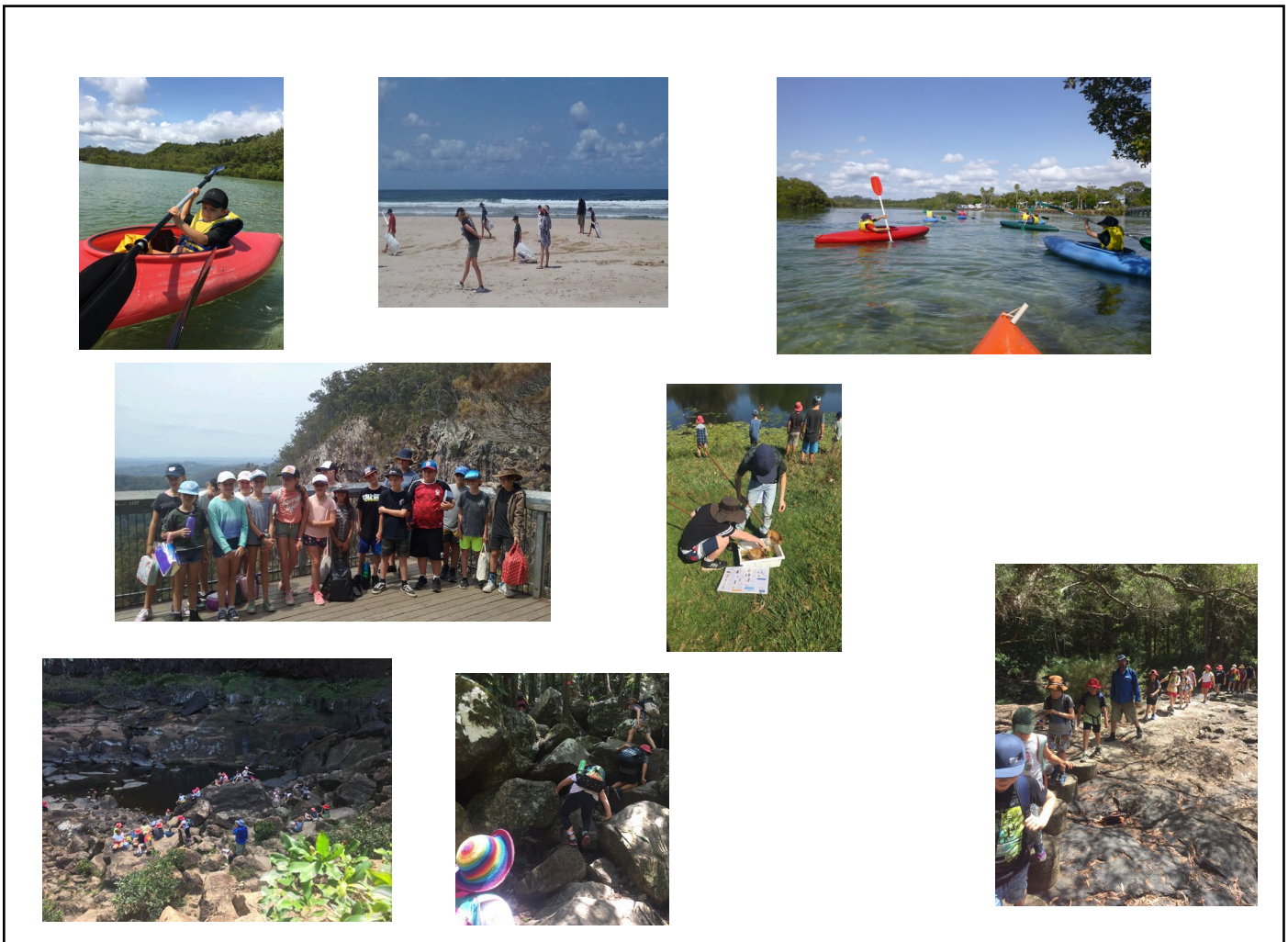
## Need materials for Art? Love making things from recycled treasures?

On Thursday 28th November 9.30am to 12.30 come to the Revolve Shop at the Lismore Recycling and Recovery Centre for our first - Artcycle. Some wonderful bits and pieces will be available for a low cost e.g. corks, bottles, CD's, tent poles, balls of wool, plastic tubes and a lot more. Watch the Lismore City Council Facebook for all the details and some creative inspiration. Perfect for Schools, Preschools and all our creative crafty types.



Environment = Life





Programs we offer include...

### Stage 6 Science program - McLeay Wetlands and Tuckean Nature Reserve - **NEW**

A local field study program created to support Stage 6 Science - Earth and Environment and Biology: Students visit local McLeay Wetland and the borage at the Tuckean Reserve; meet with local Science experts; learn about past, present and future management of the areas; and carry out Water Quality Testing.



Environment = Life

## **NEW Soil – Beneath Our Feet NEW**

Dorroughby EEC is now offering a Stage 3 Soil Science Investigation that supports Primary Connections – Beneath Our Feet and the DETNSW syllabi. Students classify soil, investigate soil erosion, use modern microscopes, practice observing and recording scientific data and create art with their own soil crayon and soil watercolours.

## **NEW Marvellous Microbes NEW**

This is an S3 incursion that happens in 2 half days 1-2 weeks apart. Students learn about micro-organisms and their role in the ecosystem. They swab designated parts of the school following scientific processes. On the return visit students examine what the swabs have grown on petri dishes under microscopes, document and analyse the results.



## **NEW Maths in Nature...**



New program for Stage 2-3 students explores aspects of Maths in the outdoor classroom. Students explore symmetry; carbon sequestration; fractions with natural objects; mapping and grid skills; and create and utilise clinometers to calculate tree heights. This can be run as an incursion, off site or at DEEC.

**Kayak program:** DEEC is happy to offer kayaking excursions in our local waterways for primary and high schools. Cost is \$20 per student but kayak numbers are limited. DEEC are happy to take small groups for an educational paddle or split a class to do on shore activities and a paddle in rotation.



## **Stage 5 Geography Program at Brunswick Heads or Cabarita Beach:**

DEEC has collaborated with Geography teachers to create a day of activities at Cabarita Beach or at Brunswick Heads. Activities complement the new Geography syllabus and give the students a hands on day using Geographer's Tools and equipment to collect and analyse data. We have also modified this program to suit schools - and used the sites of Belongil and Wategos Beaches this term.

**Senior Science:** New Syllabus Senior Science Depth Studies: A day with DEEC at one of our field sites could be the jumping off point for your Senior Science Depth Studies. We use tools to measure and compare abiotic and biotic features in Dry Schlerophyll and Sub Tropical Rainforest; and can set up scientific inquiry projects at aquatic/marine sites. Ring and discuss it with DEEC teaching staff.

## **Bunya the school yard fairy**

Dorroughby is always kept busy with mail in relation to our K-2 Need for Shelter excursion. Students have been receiving correspondence from our newest (littlest) teaching assistant; Bunya the Schoolyard fairy. She is very excited to help students learn about what the animals at DEEC needs are with regards



to shelter and to find out what the habitat is like for animals in your schools. Since we have started listening to the little people we have noticed fairy houses popping up all around DEEC.



**Botanical Illustrations:** DEEC offers a multistage program where students learn about plant adaptations, the big scrub rainforest and how to make a botanical illustration of the trees in your school yard. Your school may wish to use these illustrations to create a student made plant guide for your school.

**Stage 4 Geography Program at Ballina Flatrock:** DEEC has collaborated with Geography teachers to create a day of activities at Ballina Flatrock that complement the new Geography syllabus topic - LIVABILITY. Activities involve dissecting Ballina's services, learning about the Indigenous past of the area and using Geographer's Tools to collect data - flora and fauna transects, field sketches, coastal abiotic and mapping.

**Stage 2-3 Colonial History Program:** DEEC staff has a fabulous History Program for Stage 2-3. This is a day program that can stand alone or become part of a 2-3 day camp. The emphasis on the 1880s - way of life of the Cedar Getters and their family, how this changed the Bundjalung Nation's lives and the impact it had on Country. Students are taken back to a bygone era and can take part in activities like butter-making etc., meet a cedar-getter role play, engage in an old school house and play colonial games -an archaeological dig is also available.

**Bush Tucker Program:** DEEC run a Bush Tucker Day Program. Students learn about Bundjalung Culture - Bush Foods and Medicines from this area. They then cook and share a meal using local ingredients. What bush tucker is fruiting in your school yard?

Thanks to the students, staff and schools for successful learning engagement this term.  
Team Dorroughby.



Environment = Life