



Dorroughby Environmental Education Centre

Bundjalung Country

2101 Dunoon Rd,

DORROUGHBY NSW 2480

Phone 02 6689 5286

Email: dorroughby-e.school@det.nsw.edu.au

Website: www.dorroughby-e.schools@det.nsw.edu.au

DORROUGHBY EEC TERM 3 2023

Please distribute this newsletter to all teachers interested in Sustainability Education/Outdoor Classrooms.



Jingelah Bloggerman! Greeting Colleagues,

Term 2 was fabulously busy at DEEC with off-site field studies, incursions, excursions, and camps. Our teachers joined other Environmental and Zoo Education centres to deliver workshops in an exciting sustainability outreach program in Gunnedah, Gunnedah South and Quirindi PSs. Once again, we successfully hosted our annual Gifted and Talented Environmental Arts Camp and it has been so lovely to have sunny weather and National Parks opening again for offsite field study programs. We have very few dates available for bookings this year, so if you are considering working with us, please contact us soon to secure the dates that suit you and your students.

We are looking forward to a busy term enjoying learning outdoors and connecting with Nature.

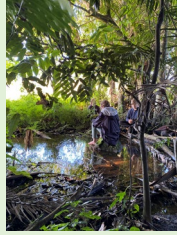
DEEC has an updated COVID-19 Safety Plan and COVID-19 Risk Assessment to supply to visiting schools.

Program information is available from our website or call our centre.

www.dorroughby-e.schools@det.nsw.edu.au



Environment = Life



Students from Barkers Vale PS enjoyed finding a quiet spot to sit in our forest while they practiced nature connection; happy to be finding more platypodes post floods.

DEEC enjoyed a camp with students from Wyrallah Public School and braved the rain while we created botanical illustrations, made marine debris art, and practiced mindfulness and nature journaling.



Nimbin Central School had a great day out in Ballina exploring the rockpools, doing a beach clean-up, and spotting whales.

Students from Xavier Catholic College collected Abiotic data in the forest at Rocky Creek Dam



Goonengerry PS students investigated adaptations and recorded Freshwater Yabby behaviour on an ethogram.

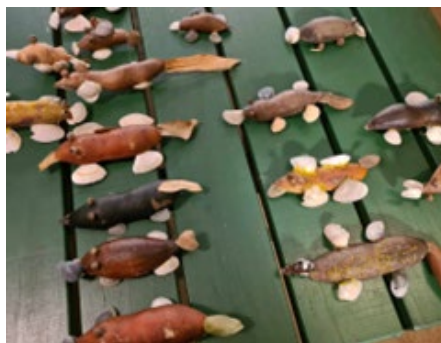


Environment = Life

Wilsons River Catchment Schools Education and Restoration Project Event was held with Albert Park PS K-6 students. DEEC ran threatened species art and science activities. A great day tree planting and being outside.



DEEC staff delivered Environmental workshops at Sustainability Outreach, events that deliver quality education to rural and remote schools that find it hard to access Environmental and Zoo Education Centres



DEEC's Environmental Arts camp

DEEC's annual Environmental Arts camp was fabulous once again. Students who were environmentally minded and artistically gifted participated in three exciting days of multi-modal arts practice in the rainforest and at Dorroughby. This year focused on Music in the environment and block printmaking as well as digital photography, drumming, nature journaling, T-shirt dying and making 3-D sculptures of platypodes.



Environment = Life

Investigate Freshwater Yabby behaviour with an Ethogram.



Stage 2-3 Science Investigation

This incursion can happen in your schools with live yabbies! The students conduct an ethogram of freshwater yabby behaviour with the guiding inquiry question: How do the structural and behavioural features of living things support survival? Student learning focuses on the growth and survival of living things and how their adaptations over time suit their environment. This program focuses specifically on Freshwater Yabbies found in our local creeks. It covers the following outcomes; ST3-4LW-S examines how the environment affects the growth, survival, and adaptation of living things ST3-1WS-S plans and conducts scientific investigations to answer testable questions, and collects and summarises data to communicate conclusions. We would need to purchase some more yabbies , so if you are keen on this program, book early. 😊

Big Scrub Pocket Forest at your school

Interested in planting a Big Scrub Pocket Forest in your school? See flyer on last page.



Our programs can be viewed via our website.

<https://dorroughby-e.schools.nsw.gov.au/programs/primary-programs.html>

<https://dorroughby-e.schools.nsw.gov.au/programs/secondary-programs.html>

Please don't hesitate to contact the DEEC if you have an idea of how we can collaborate with you to support Education Delivery,

Team Dorroughby



Environment = Life



BIG SCRUB POCKET FOREST

(Geography, History, Science, Maths, Indigenous perspectives, Sustainability)

Aims: To create intergenerational biodiversity hot spots within local schools that engage and foster students' knowledge and love of our endemic flora and fauna, through the planning, and creation of situationally appropriate Nyambir (Small) Muruwi (Forests). To create endangered Big Scrub pockets within our region. <https://www.youtube.com/watch?v=FA4L3dSurCk>

1. Interested schools contact DEEC.
2. Preconstruction of your school's forest:

Preparing- Half Day:

- **Site assessment** - Assessing the best site for your (Big Scrub Pocket Forest)
- Consultation will include principal and possibly GA and other key stakeholders (1-2 hours)
- Decide on suitable times for construction and lessons.

3. **DEEC purchase the materials:** Big Scrub species seedlings/soil enhancers/mulch etc.

Costings (include DEEC teachers for construction and lessons)

\$7500* - 10 m by 5 m - Approximately the size of 2 car parking spaces

\$8500 - 20 m x 10 m - Approximately the size of 4 car parking spaces

***If site is very compacted, we may need to hire a backhoe/excavator to till the soil.**

4. **Implementing the creation/construction of your school's forest - 4 whole days**

A cross curricula, scaffolding approach to the Pocket Forest process is desirable.

Day 1

- Session 1: Students first learn about the importance of forests; rotate through mini stations with experiments and info- humus/ decomposers, leaves softening rain, roots holding soil, transpiration/leaves in bag, enjoy sit spots and nature journaling.
- Session 2: they can do abiotic measurements; temperature under trees vs in the sun, photosynthesis, and oxygen production experiment. Biodiversity survey...
- Session 3: How do humans connect with forests and what are the impacts? Looking at Big Scrub deforestation, climate change, Aboriginal and Torres Strait Islanders connections, Indigenous forest peoples of the world.
- Additionally: Plant propagation, save the rainforest banners, habitat games etc.

Day 2 and 3 (need to be consecutive):

- **Preparing the site-** (2 Dorroughby staff over 2 days). Can be done with students or without. Ground prep - removal of grass, tillage, addition of amendments, mulching and string line added at 1 m intervals, ready for planting.

Day 4:

Session 1: **Planting and mulching of forest** (2 DEEC staff -1 day) with DEEC staff and school community.

Session 2: Discussion of ongoing care including access to the DEEC Pocket Forest Google Drive site. Detailed explanation of watering and care within the first year. Discuss how to conduct regular biodiversity surveys, contribute to ongoing research, interact with the forest for food, medicine, fibre. Signage for some bush tucker species.

5. **Follow up morning** - 6 months after planting. DEEC staff return, assess, and run a few activities.

